

PRODUCT FACT SHEET

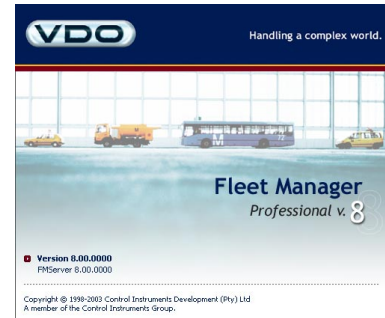
FM PROFESSIONAL v8

OVERVIEW

Fleet Manager *Professional* (FM *Professional*) is an enterprise solution, designed to leverage the power and flexibility of the full range of Fleet Manager on-board computers, accessories and peripherals. FM *Professional* is a client-server application which can run on a stand-alone computer or scale to run with components distributed across a local area network (LAN), wide-area network (WAN) or even the Internet.

FM *Professional* includes functionality for monitoring and managing driver and vehicle performance, controlling communications costs, reporting on fleet operating costs, active (real-time) and passive (after-the-fact) tracking of vehicles and drivers, location management, communications and messaging, route planning and variance reporting, trailer management, vehicle maintenance reporting, service reminders and much more.

FM *Professional* includes the powerful Fleet Manager Communications Suite and a comprehensive collection of Extensions (add-ons) designed to meet the unique requirements of diverse vertical markets such as exploration and safety, materials handling and others.



FEATURES

Familiar Look and Feel	FM <i>Professional</i> has a familiar Microsoft Outlook-like look and feel, making it easy to use. The familiar Windows tree view and shortcut bar provides quick access to commonly used features.
Shortcut Bar	The shortcut bar contains links to the most frequently used functions and reports. Shortcuts to your favourite reports and graphs can be added to the shortcut bar.
Vehicle, Driver and Passenger Details	FM <i>Professional</i> makes it easy to manage vehicle, driver and passenger details including service and license reminders.
Manage and Configure Equipment	Configure your Fleet Manager on-board computers, accessories and peripherals easily using the powerful yet easy to use Device and Event Wizards. Wizards simplify complex tasks by breaking them down into a series of easy to understand steps. Decide which events should be monitored and recorded by your on-board computers. Set threshold values such as speed and RPM limits etc.
Customised Events **	Define your own powerful events to detect conditions important to you for example entry into a no-go zone.
Management Reporting	Over 20 standard reports and graphs are available to help fleet owners understand more about performance and utilization of their vehicles and drivers.
Vehicle Tracking **	Track your vehicles on a digital map. Various tracking methods are available to suit your business requirements.
Multiple Communications Options **	FM <i>Professional</i> provides a variety of options for the transfer of data between the vehicle and the office. Data transfer can be done manually using code-plugs or automatically using DECT (short range) or the GSM network (long range)
Messaging and Jobs **	Keep in contact with your drivers using cost-effective technologies such as GSM SMS or GPRS. FM <i>Professional</i> gives you full control over communications costs allowing you to decide which information is important enough to be sent in real-time and which information can be downloaded later using cheaper communications methods. Send your drivers job instructions and monitor job progress. Seamless integration with the VDO Dayton range of navigation systems ensures drivers can concentrate on their driving without worrying about how to get there.

Various Extensions Available	A variety of Extensions (add-ons) to FM Professional are available providing additional functionality.
Support for Accessories	FM Professional supports accessories and peripherals such as GPS receivers, GSM modems, FM DECT, FM Terminal, FM Info, FM Trailer ID, FM Keypad, FM Impact Sensor and others.
Scalable architecture	FM Professional is a client-server application which can run on a stand-alone computer or scale to run with components distributed across a local area network (LAN), wide-area network (WAN) or even the Internet.
Microsoft SQL Server Database Technology	FM Professional can run on a stand-alone computer using the free SQL Server Database Engine included with the software or it can be integrate into the company's existing SQL Server infrastructure.
Internationalised	FM Professional supports over 11 different languages, daylight savings, different units of measure and different currencies.

** Not applicable to FM100 on-board computers

REPORTS AND GRAPHS

Various reporting levels are available including individual driver or vehicle reports, reports based on user defined groups, reports by site and summary reports. Selection criteria can be saved and re-used to simplify the generation of frequently used reports and graphs. Shortcuts to your favourite reports and graphs can be added to the shortcut bar.

Your company's logo can be used in reports in place of the standard VDO logo.

Activity Timeline	One of the most powerful features of FM Professional is the Activity Timeline which provides an interactive graphical overview of vehicle and driver activities during a 24 hour period. Trips and events are displayed graphically on the timeline. Clicking on an item in the timeline or selecting a time period by dragging your mouse displays the details of what took place.
Trip Report	Available with varying levels of detail, the trip report shows trip start, depart, arrival and end times, driving time, idling time, parking time, maximum speed, average speed, distance driven, odometer reading and more.
Event Report	Displays the number of occurrences, duration and value of all or selected events (including your own custom events) for the specified time period.
Driving Errors Report	Provides an overview of driver performance. Shows a summary of driving errors.
Driver Scoring Report	The Driver Scoring Report is an objective matrix calculating driver scores using a set of user-defined parameters. An Advanced Driver Scoring Extension is also available.
Accident Analysis	The Interval (Tacho) Data Graph displays the second-by-second values of speed, RPM and other inputs such as headlight status, brake pedal status etc. This detailed information is useful for performing accident analysis.
Fuel Consumption	The Fuel Consumption reports show fuel consumption and highlight variances against targets. Reports can be based on captured fuel transactions, actual fuel usage measured by the on-board computers or a comparison of the two.
Performance Summary	The Performance Summary Report is a utilisation report displaying the percentage driving time, idling time, standing time, distance driven and more, allowing you to monitor vehicle and driver utilisation.
Graphs	A number of powerful graphs are available.
Additional Reports and Graphs	A variety of Extensions exist which provide additional reports and graphs.

MAPPING AND TRACKING

Various map viewers are available to display the geographical position of the vehicles. The Fleet Manager GPS Log Viewer for MapPoint covers Europe and North America. Other Fleet Manager GPS Log Viewers exist to cover regions such as South Africa, Africa, Australia, Taiwan, Chile etc.

Active Tracking

FM Professional supports tracking of vehicles in real-time known as Active Tracking. You can start or stop tracking a vehicle by sending an instruction from the office. The on-board computer can also be configured to initiate tracking automatically when user-defined events or conditions are detected.

Passive Tracking

FM Professional also supports tracking of vehicles after-the-fact known as Passive Tracking. After trip data has been downloaded and stored in the Fleet Manager Database, you can view the routes your vehicles took on an interactive map or using the extensive suite of Location Reports. This enables you to monitor the routes driver take and highlight vehicles entering and/or exiting pre-defined locations. You can also configure the on-board computers to record the GPS position when specific events occur and view where the vehicle was when events occurred.

FM DEVELOPMENT PROGRAMME

Third parties can develop software extensions to the FM *Professional* software. This is possible through the FM Extension Manager. Version specific software development kits (SDK's) are available to interested parties.

SYSTEM REQUIREMENTS

Operating System	Windows 2000, Windows XP Professional
Processor	Pentium IV 1.6 GHz or higher
Disk Space	1 GB free disk space
RAM	1 MB RAM
Database Server	MS SQL Server 2000 SP3a